

WELL DRILLING
PUMP * CONTROLS
SALES & SERVICE

ST. PAUL, OR
(503) 633-2666



SCHNEIDER
EQUIPMENT, INC.
WATER SERVICES

21881 River Rd N.E., St. Paul, OR 97137
www.seidc.com

SINCE 1945
OR CCB: 39265
WA UBI: 600202757

RICHLAND, WA
(509) 943-0331

QUALIFICATIONS

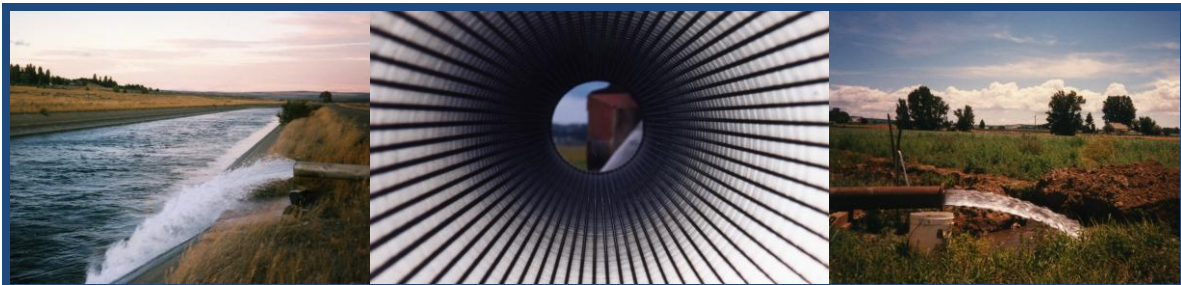
Schneider Equipment, Inc. (SEI) is a third generation firm started by Milo & Rita Schneider in 1945. SEI employs approximately 30 full time employees with over 200 years of combined water related experience. SEI currently employs six full time drillers, licensed in Washington & Oregon, with over 100 years drilling experience. Additional credentialed employees include:

- Supervisor & Journeyman Electricians
- Licensed Pump Installers
- Licensed Specialty Plumbers

Kriss, Stan, & Steve Schneider are the current owners. Kriss (B.S. in Business Management & Organizational Leadership, George Fox University) heads up the sales and service division. In addition to pump sales & service and their controls, Kriss' group handles water treatment sales & service. Stan (B.S. degrees in Electrical Engineering & Math, Oregon State University) manages the construction division. He handles project estimating and construction supervision for municipal, industrial, and agricultural turn-key pump stations and water treatment facilities. Steve (B.S. in Mechanical Engineering, Oregon State University) oversees SEI's drilling division and coordinates projects related to well drilling, abandonment, and repair. He also manages specialty-drilling projects such as elevator jack holes.

SEI has the tools and equipment to support its services and staff, including:

- AirShock Impulse Generator
- Drill rigs up to 250,000 pound hook load
- Pump hoists up to 120,000 pound hook load
- Down-Hole Color Video Cameras including side view



WWW.SEIDC.COM

"Serving the water needs of the Northwest since 1945"

**ONE STOP WATER
PROFESSIONALS**



**SERVING ALL OREGON
& WASHINGTON**

SERVICES

➤ **Well Drilling**

- Reverse Circulation
- Mud Rotary
- Air Rotary
- Cable Tool

➤ **Pumps**

- Submersible
- Line-shaft Turbine
- Centrifugal
- Specialty

➤ **Machine shop**

- Complete Pump Repair
- Custom Machining & Fabrication

➤ **Electric**

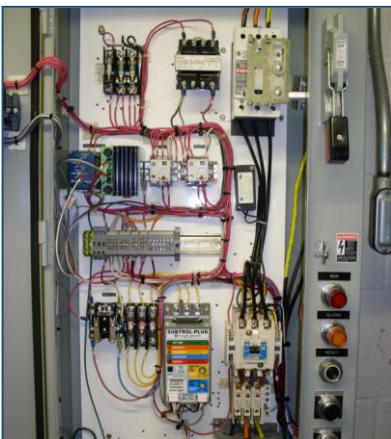
- Variable Frequency Drives (VFDs), Soft & Full Voltage Starters
- Custom Controls
- ETL Panel Shop

➤ **Well Services**

- Impulse Generator Development
- Mechanical / Chemical Rehabilitation
- Decommissioning / Abandonment

➤ **Other**

- Turn-Key Water Systems
- Water Treatment Systems
- Test Pumping



MARKETS

➤ Municipal

➤ Industrial

➤ Irrigation

➤ Domestic

WWW.SEIDC.COM

"Serving the water needs of the Northwest since 1945"